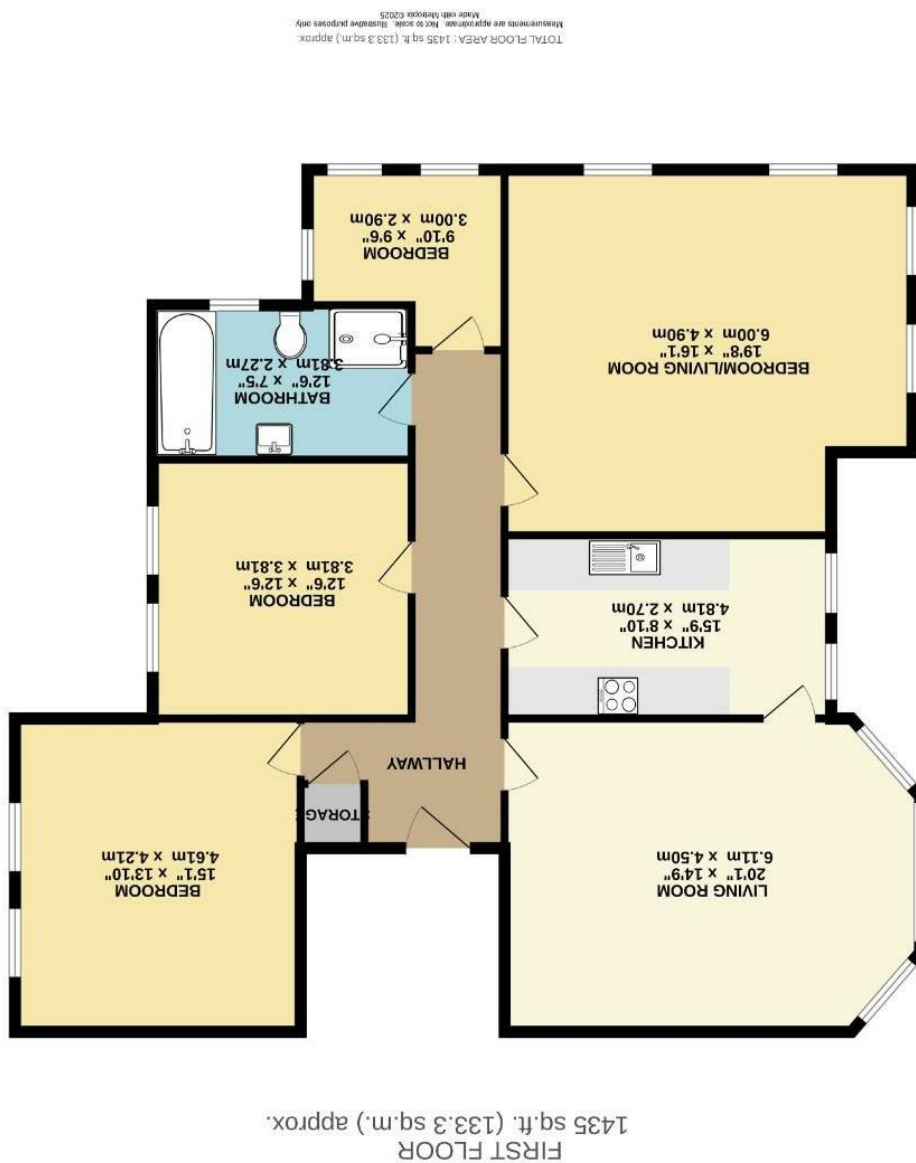


Fishwick nor the vendor or lessor accept any responsibility in respect of these particulars, which are not intended to be statements or representations of fact and any intending purchaser or lessee must satisfy himself by inspection or otherwise as to the correctness of each of the statements contained in these particulars. Any floorplans on this brochure are for illustrative purposes only and are not necessarily to scale.





Mersey Road, West Didsbury  
M20 2PY

£475,000

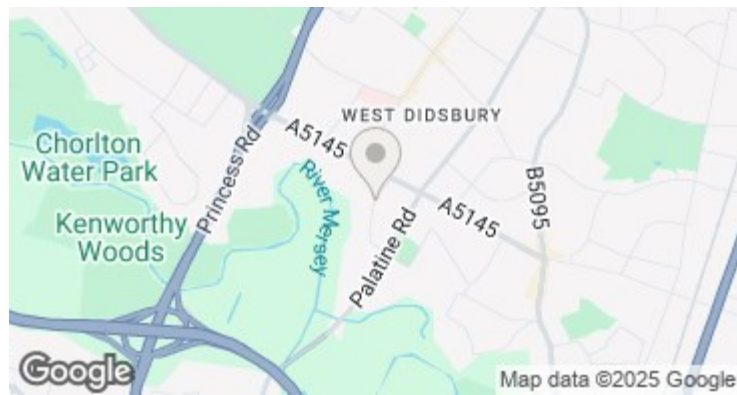


**The Property**

A wonderfully generous and extremely unique first floor apartment with over 1400 sq ft of living space, forming part of a striking period mansion that was originally the residence of the Italian Consulate and now provides a small number of individual properties with a secluded setting in West Didsbury. Recently refurbished, the property comprises a reception hall over 25ft with storage cupboard, magnificent living room over 20ft with high ceilings and bay window, a door through to the light and spacious fitted kitchen, a dual aspect bedroom/sitting room, two further double bedrooms, a fourth bedroom with dual aspect and a luxury large family bathroom. In addition, there is a large stone chipped and gated forecourt to the front of the building providing ample residents parking. \*NO ONWARD CHAIN\*

**Directions**

M20 2PY



- Four bedrooms
- Recently refurbished
- Internal living space over 1400 sq ft
- Spacious living room with bay window
- Secure gated parking
- First floor flat
- Council tax band - D / EPC - C
- Impressive converted mansion
- Additional bedroom/lounge over 19ft
- NO CHAIN

Postcode - M20 2PY

EPC Rating - C

Floor Area - 1435.00 sq ft

Local Authority - Manchester City Council

Council Tax - D

